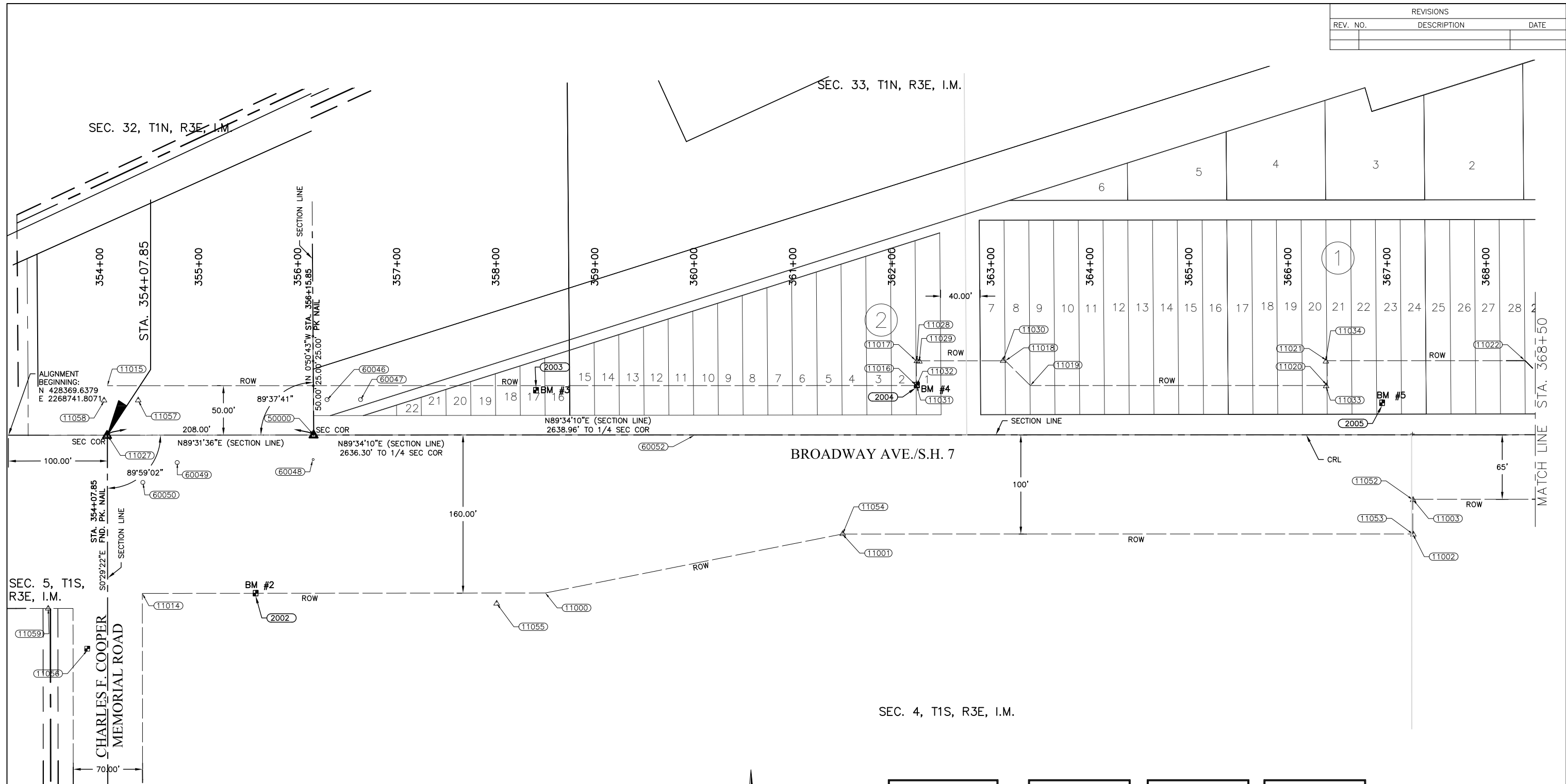


REVISIONS		
REV. NO.	DESCRIPTION	DATE



STA. 355+57.00
159.94' OFFSET RIGHT
BENCH MARK NO. 2
IRON PIN (3/8")
ELEV.= 971.785
N 428211.7653
E 2268992.2744

STA. 358+40.47
45.14' OFFSET LEFT
BENCH MARK NO. 3
IRON PIN (3/8")
ELEV.= 961.833
N 428419.0062
E 2269274.0698

STA. 362+25.20
50.05' OFFSET LEFT
BENCH MARK NO. 4
IRON PIN (3/8")
ELEV.= 954.169
N 428426.8104
E 2269658.7529

STA. 366+94.80
32.08' OFFSET LEFT
BENCH MARK NO. 5
IRON PIN (3/8")
ELEV.= 949.951
N 428412.3688
E 2270128.4794

SULPHUR SIDEWALK IMPROVEMENTS SURVEY DATA SHEET STA. 354+07.85 TO 368+50		Drawn	J ALEX	7/27/17
CITY OF SULPHUR BROADWAY - CHARLES F. COOPER MEMORIAL ROAD TO 12TH STREET		Design	WTM	7/27/17
STATE OF OKLAHOMA		Checked	WTM	7/27/17
DEPARTMENT OF TRANSPORTATION		JOB NO. 210101		
DIVISION 7		SHEET NO. 6 OF 34		

J:\Sulphur\210101\cadd\2017 Phase 1\SURVEY_DATA_01.dwg, 8/10/2017 10:37:18 AM, JonA, 1:2